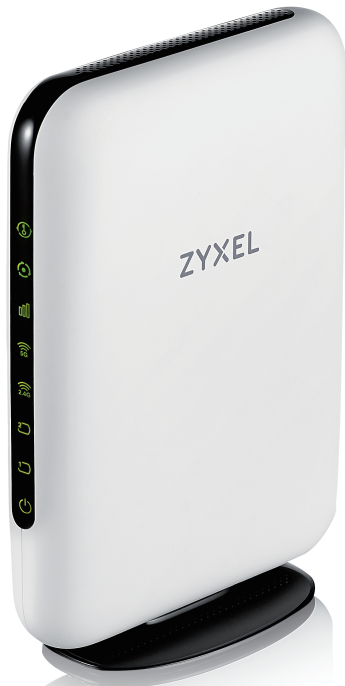


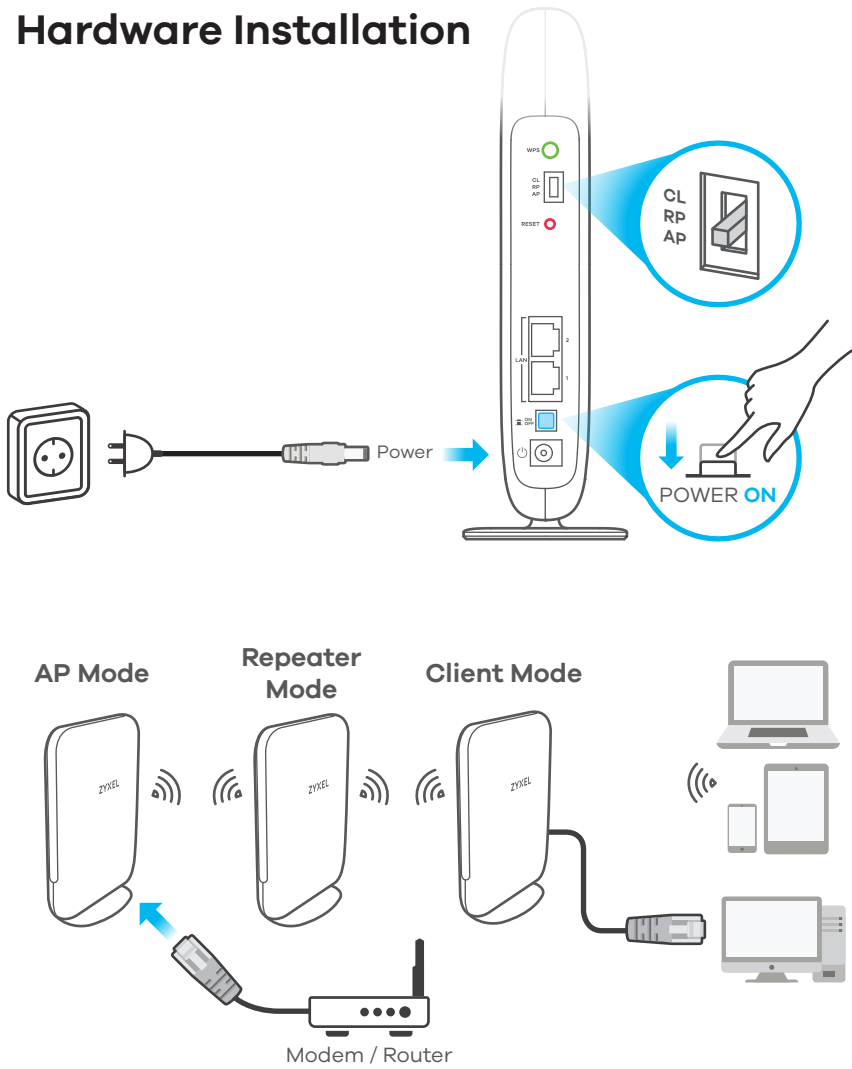
Quick Start Guide

WAP6804
Dual-Band AC2100 Gigabit Wireless Bridge

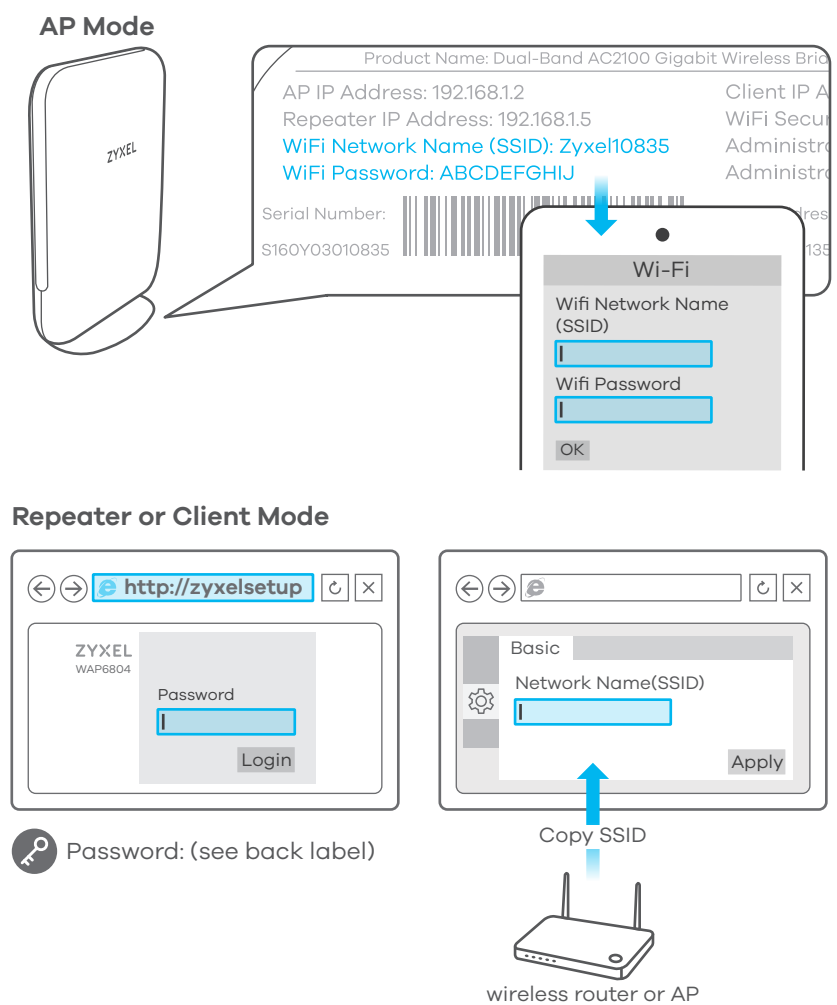


ZYXEL ENGLISH

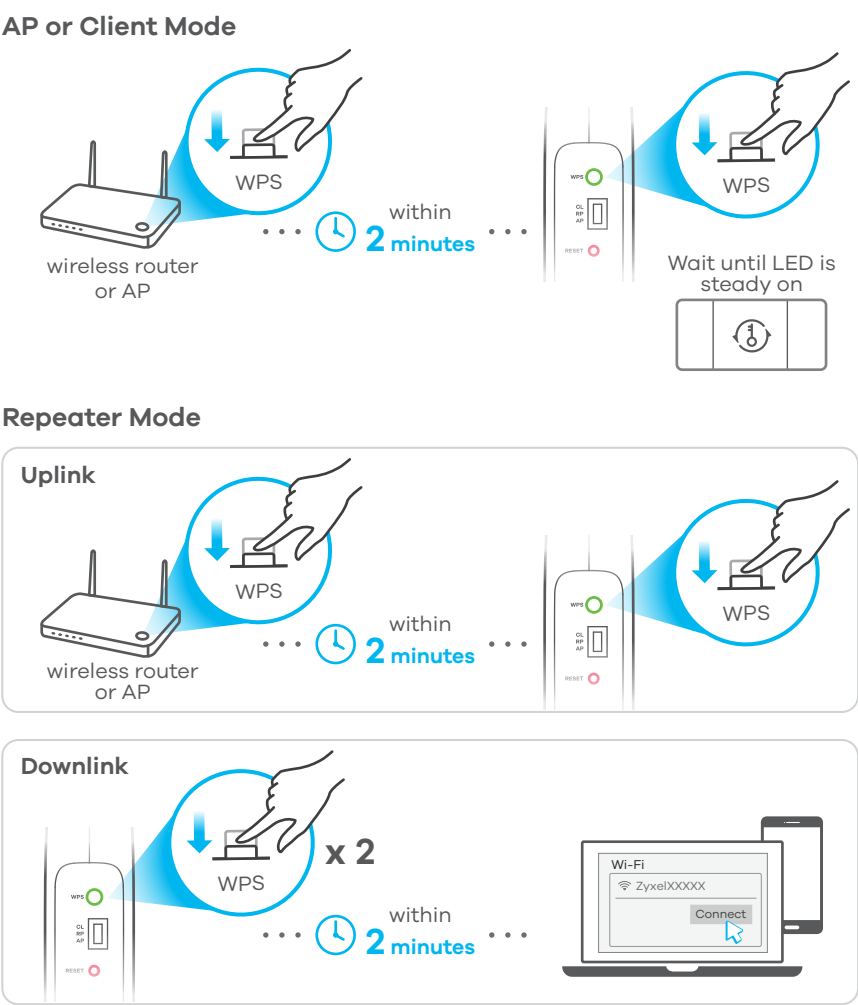
Hardware Installation



Wireless Connection Using the Label Info



Wireless Connection Using WPS



WPS	<div><div></div><div></div><div></div></div>	<div><div>Green - On - WPS process finished.</div><div>Blinking - WPS in progress.</div><div>Red - On - WPS failed.</div></div>
Mode	<div><div></div></div>	<div><div>Green - On - AP mode.</div><div>Blinking - Repeater mode.</div><div>Amber - On - Client mode.</div></div>
Link Quality	<div><div></div></div>	<div><div>AP Mode</div><div>Green - On - Client link is good.</div><div>Repeater/ Client Mode</div><div>Green - On - Wireless router/AP link is good.</div><div>Amber - On - Wireless router/AP link is fair.</div><div>Red - On - Wireless router/AP link is poor.</div></div>
5Ghz Wireless	<div><div></div></div>	<div><div>AP Mode</div><div>Green - On - Client 5G link.</div><div>Repeater/ Client Mode</div><div>Green - On - Wireless router/AP 5G link.</div><div>Green - Blinking - Sending and receiving data.</div></div>
2.4Ghz Wireless	<div><div></div></div>	<div><div>AP Mode</div><div>Green - On - Client 2.4G link.</div><div>Repeater/ Client Mode</div><div>Green - On - Wireless router/AP 2.4G link.</div><div>Green - Blinking - Sending and receiving data.</div></div>
LAN2	<div><div></div></div>	<div><div>Green - On - Ethernet connection ready on port 2.</div><div>Blinking - Sending and receiving data.</div></div>
LAN1	<div><div></div></div>	<div><div>Green - On - Ethernet connection ready on port 1.</div><div>Blinking - Sending and receiving data.</div></div>
Power	<div><div></div></div>	<div><div>Green - On - Power on.</div><div>Off - The WAP6804 is not receiving power or is turned off.</div></div>

Support Information

North America + 1 800 978 7222
USA support@zyxel.com

- EN Use the included power adaptor to connect the WAP6804 power port to an appropriate power outlet. Refer to the figure for the WAP6804's mode and move the switch to **AP** (AP mode), **RP** (Repeater mode) or **CL** (Client mode). Turn the WAP6804 on.
- AP mode: use an Ethernet cable to connect your wireless router or AP to an Ethernet port of the WAP6804.
- Repeater mode: configure the WAP6804 to connect to your wireless router or AP wirelessly.
- Client mode: use an Ethernet cable to connect a computer or smart TV or gaming device to an Ethernet port of the WAP6804.

- EN AP mode: note the SSID and password from the label located at the bottom of the WAP6804. On your laptop or smartphone, search for the AP with this SSID and then enter the password to connect wirelessly to the WAP6804.
- Client or Repeater mode: note the SSID and password on your wireless router or AP and enter them in the WAP6804 web configurator (<http://zyxelsetup>). On your laptop or smartphone, search for the AP with this SSID and then enter the password to connect wirelessly to the wireless router or AP.

- EN WPS WAP6804 **AP / Client**: Press once. Press WPS on the wireless router/AP within 2 minutes. Wait for the 2.4G / 5G LED to light.
- WPS WAP6804 **Repeater** uplink: Press once. Press WPS on the wireless router/AP within 2 minutes. Wait for the 2.4G / 5G LED to light.
- WPS WAP6804 **Repeater** downlink: Press twice within 3 seconds. Press WPS on a wireless client within 2 minutes. Check the 2.4G / 5G LED link on the client.

Safety Warnings

- Humid, dusty and extreme environment in which place the product and obstructing the device ventilation slots are prohibited, any kind of conditions above may harm your device.
- There is a remote risk of electric shock from lightning.
- (1) do not use the device outside, and make sure all the connections are indoors.
- (2) do not install, use, or service this device during a thunderstorm.
- Connect only suitable accessories to the device; make sure to connect the cables to the correct ports.
- Do not open the device, opening or removing covers can expose you to dangerous high voltage points or other risks please, contact your vendor for further information.
- Place connecting cables carefully so that no one will step on them or stumble over them and disconnect all cables from this device before servicing or disassembling.
- Please use the provided or designated connection cables/power cables/ adaptors. connect it to the right supply voltage (for example, 110V AC in North America or 230V AC in Europe), If the power adaptor or cord is damaged, it might cause electrocution. remove it from the device and the power source , repairing the power adapter or cord is prohibited , Contact your local vendor to order a new one.
- Risk of explosion if battery is replaced by an incorrect type, dispose of used batteries according to the instruction.
- Please refer to the device back label, datasheet or box specifications catalog information for rated power of device and operating temperature.
- The socket-outlet shall be installed near the device, and shall be easily accessible because it serves as the main disconnecting device.

European Union - Disposal and Recycling Information

The symbol below means that according to local regulations your product and/or its battery shall be disposed of separately from domestic waste. If this product is end of life, take it to a recycling station designated by local authorities. At the time of disposal, the separate collection of your product and/or its battery will help save natural resources and ensure that the environment is sustainable development.



	BE	BG	CZ	DK	DE	EE
	IE	EL	ES	FR	HR	IT
	CY	LV	LT	LU	HU	MT
	NL	AT	PL	PT	RO	SI
	SK	FI	SE	UK		

US Importer
Zyxel Communications, Inc
1130 North Miller Street Anaheim, CA 92806-2001
<http://www.us.zyxel.com>